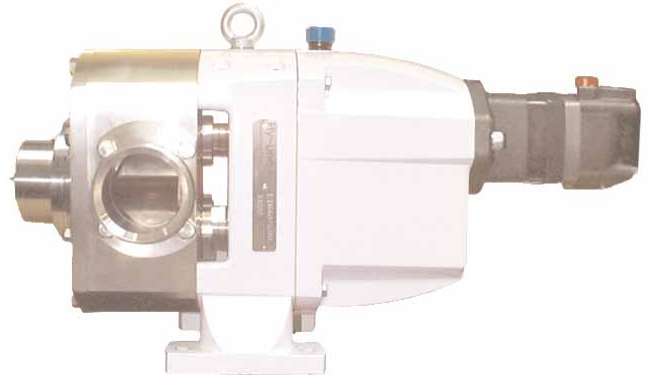


Applications

- The Hy~Line LT range of truck mounted pumps are used for the loading and unloading of a wide variety of products. These include:
- Food / Dairy / Beverage - including syrups, glucose, chocolate, fruit extracts, edible, oils, milk.
- Pharmaceuticals / Chemicals.



Features

- Corrosion resistant 316 stainless steel pumphead
- Lightweight aluminium bearing housing
- Adaptable foot mounting for horizontal or vertical port orientation
- All seals accessible from the front of the pump without dismantling pipework
- Scimitar rotors for high efficiency, smooth flow and high tolerance of abuse
- Exceptionally quick and easy maintenance
- Easy change port type/size
- Flush rotor fixing and easy access seals ensure maximum cleanability – including CIP
- Reversible flow

Specifications

- Pumphead 316 stainless steel (1.4401)
- Bearing housing Epoxy coated aluminium
- Flow
 - LT52 - 254 L/M
 - LT54 - 437 L/M
 - LT62 - 461 L/M
 - LT64 - 684 L/M
- Max Pressure
 - LT52 - 15 Bar
 - LT54 - 8 Bar
 - LT62 - 15 Bar
 - LT64 - 8 Bar
- Temperature -30°C to +140°C
- Viscosity 1 to 1 million cP
- Standards Conforms to US-3A standard 02-09, Designed to meet EHEDG protocols for CIP, US-FDA materials of construction

Options

- Drive
 - “Plug-in” Hydraulic motor mounting
 - Conventional long coupled drive for electric motor, hydraulic motor or PTO, using LH Series (not shown)
- Seals
 - O-ring seals
 - Single mechanical seal
 - carbon/stainless steel
 - carbon/silicon carbide
 - silicon carbide/silicon carbide
 - all with flush if required
- Ports
 - Clamp, BSP, IDF, RJT, SMS, DIN, 3A bevel seat, NPT, others on request
- Cover
 - Plain
 - Integral pressure relief valve
- Elastomers
 - Nitrile to 3A 18-02
 - EPDM to FDA title 21, para 177.2600
 - Viton to FDA title 21, para 177.2600
 - PTFE
- Mounting
 - Horizontal or vertical port orientation

Technical

Size	52	54	62	64
Displacement (l/100 revs)	26.5	45.5	64.0	95.0
Standard Port Size mm (inch)	38/40 (1½)	50 (2)	65 (2½)	76/80 (3)
Enlarged Port Size mm (inch)	50 (2)	76/80 (3)	76/80 (3)	100 (4)
Reduced Port Size mm (inch)	-	-	50 (2)	-
Max. diff. press. (bar) High Pressure	15	8	15	8
Max. diff. press. (bar) High Efficiency	5	-	5	-
Maximum Speed (rpm)	960	960	720	720
Maximum Flow (l/min)	254	437	461	684

Performance

Figures based on a differential pressure of 5 Bar

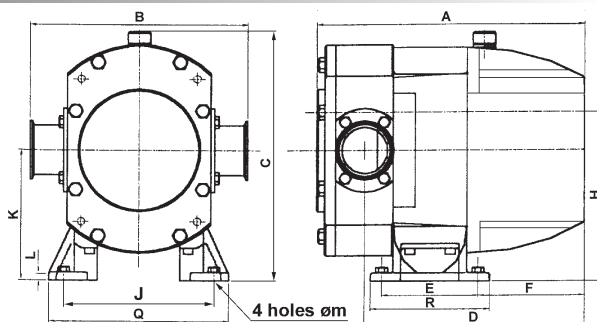
Model	Speed	10 cP		500 cP		2,000 cP		Maximum Viscosity cP
		Flow L/m	Power Kw	Flow L/m	Power Kw	Flow L/m	Power Kw	
LT52	500	100	1.6	133	1.7	133	2.0	5,000
	750	160	2.4	200	2.7	200	3.0	2,000
	1,000	230	3.2	265	3.6	-	4.0	900
LT54	500	160	2.8	228	3.1	228	3.4	5,000
	750	275	4.1	341	4.6	341	5.2	2,000
	1,000	380	5.5	455	6.2	-	6.9	900
LT62	300	100	2.3	192	2.6	192	2.9	15,000
	500	240	3.9	320	4.4	320	4.9	5,000
	720	380	5.6	461	6.3	461	7.0	2,000
LT64	300	230	3.4	285	3.9	285	4.3	15,000
	500	400	5.8	475	6.5	475	7.3	5,000
	720	600	8.3	684	9.7	684	10.4	2,000

Dimensions

The dimensions shown here are for guidance purpose only, refer to Jabsco certified drawing

Pump	A	B	C	D	E	F	H	J	K	L	M	Q	R	Kg
LT52	368	249	244	319	84	209	160	180	120	6	9	214	104	31
LT54	396	259	244	338	84	209	160	180	120	6	9	214	104	35
LT62	435	288	311	372	122	225	225	200	175	10	11	240	157	62
LT64	464	302	311	381	122	225	225	200	175	10	11	240	157	65

Dimensions above exclude relief valve



Jabsco



ITT Industries

USA

Jabsco
1485 Dale Way
Costa Mesa
CA 92628-2158

Tel : +1 714 545 8251
Fax : +1 714 957 0609

UK

Jabsco
Bingley Road
Hoddesdon
Hertfordshire, EN11 0BU

Tel : +44 (0) 1992 450 145
Fax : +44 (0) 1992 467 132

GERMANY

Jabsco GmbH
Oststraße 28
22844 Norderstedt

Tel : +49 (0) 40 53 53 73 0
Fax : +49 (0) 40 53 53 73 11